

PLAT AND RECORD

Of a Survey on Section 24, 25 T 1 R 13 E. of the 4 P. M. in BELOIT Township

Rock County, Wisconsin, made the _____ the _____ 19 _____

I hereby certify that the following is a correct record of said survey ~~made by me~~.

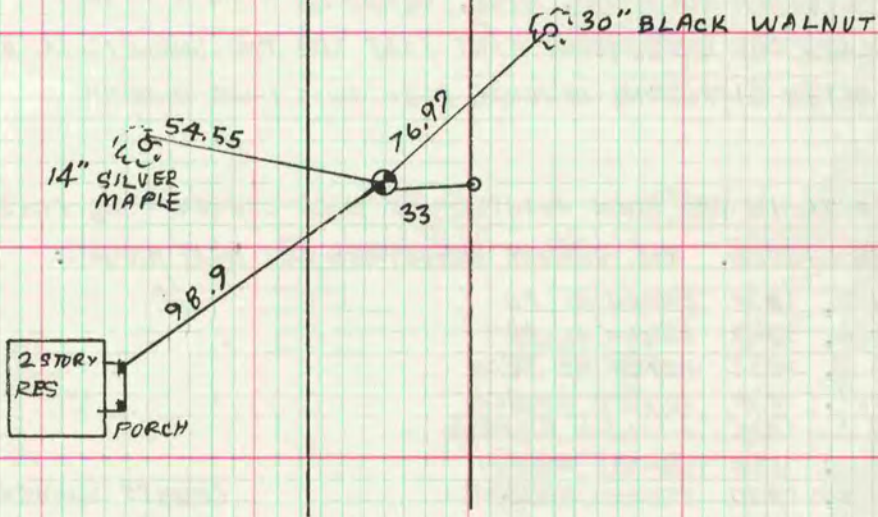
COUNTY BUILDING
CITY OF JANESVILLE

Wm. Barnes

County Surveyor.

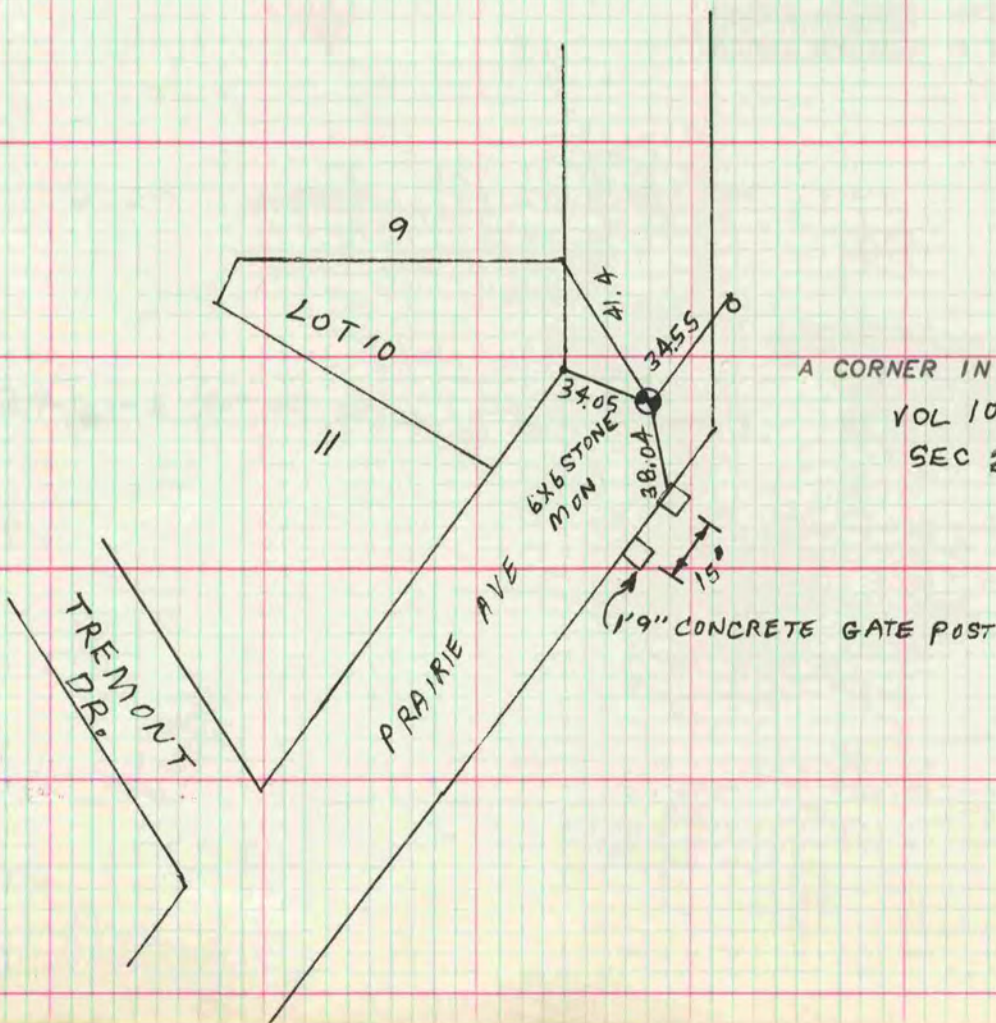
E 1/4 COR SEC 24

FOUND C.I WAGON WHEEL HUB
10" LOW WITH L.S ON SOUTH SIDE



MICROFILMED

THE ABOVE AND BELOW CORNER TIES WERE FOUND ON SOME OLD PRINTS



A CORNER IN HIGH LAND HTS ADD.
VOL 10 Page 38 1925
SEC 25