

PLAT AND RECORD

325

VOL. 6

Of a Survey on Section 19 T 2 R 10 E. of the 4 P. M. in **SPRING VALLEY** Township

Rock County, Wisconsin, made Nov 2 the 28

I hereby certify that the following is a correct record of said survey

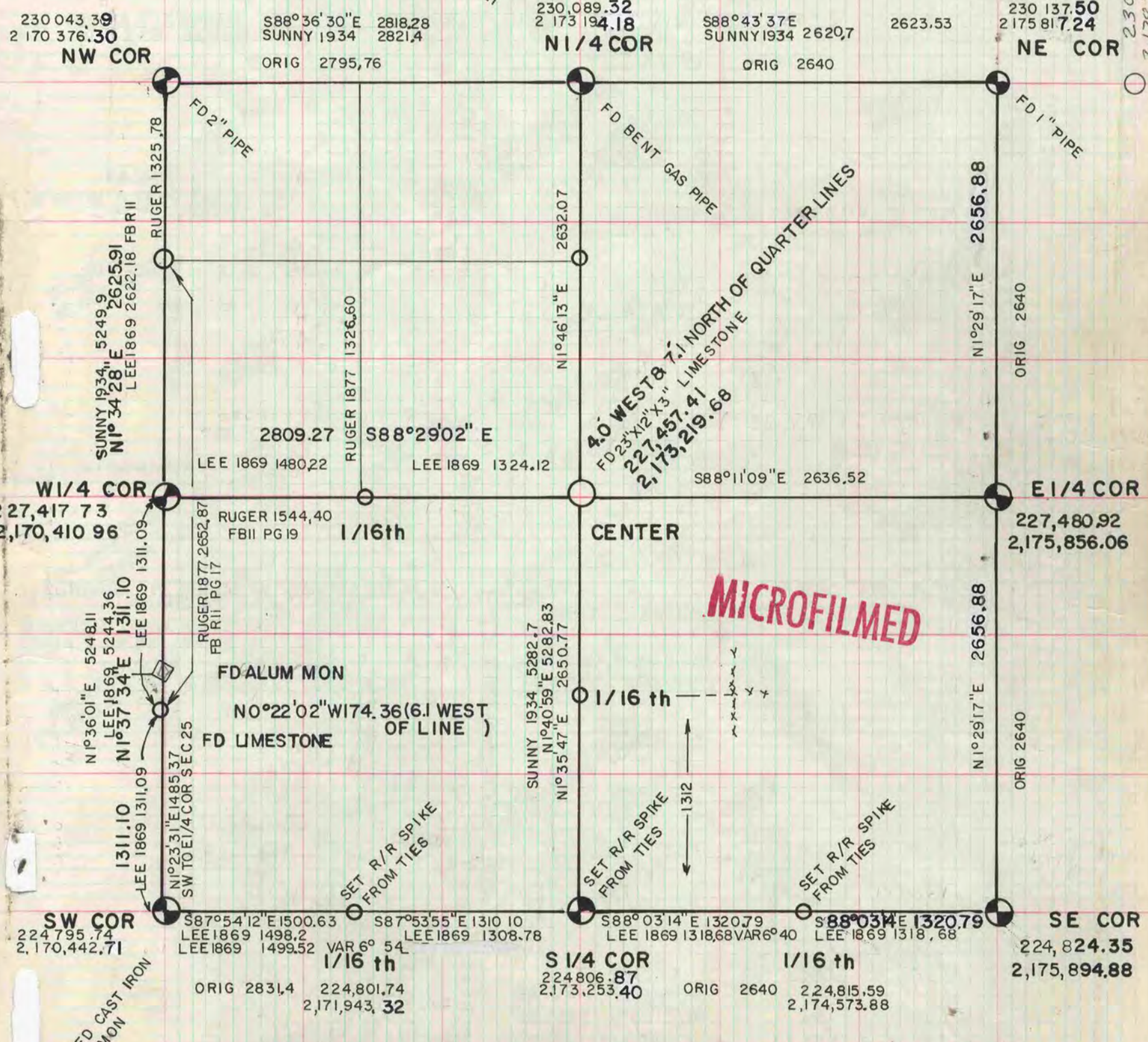


COUNTY BUILDING
CITY OF JANESVILLE



BEARINGS & DISTANCES ARE BASED ON ASSUMED DATUM

230 144.18 S.T.H. Sheet 4-2
2,178,463.67 PROJ 1904-04-21



MICROFILMED

THE STATE PLANE COORDINATES ARE COMPUTED FROM A TRAVERSE FROM RISUM(219,528.39; 2,187,995.82) TO STA BROD (225,526.44; 2,167,176.60). ANGLES WERE TURNED TO THE OLD WATER TANK (226,393.69; 2,166,982.82) IN BRODHEAD. THE TRAVERSE WAS ADJUSTED BY THE LEAST SQUARES METHOD. ALL BEARINGS AND DISTANCES ARE BASED ON A LOCAL DATUM.