

PLAT AND RECORD

335
VOL. 6

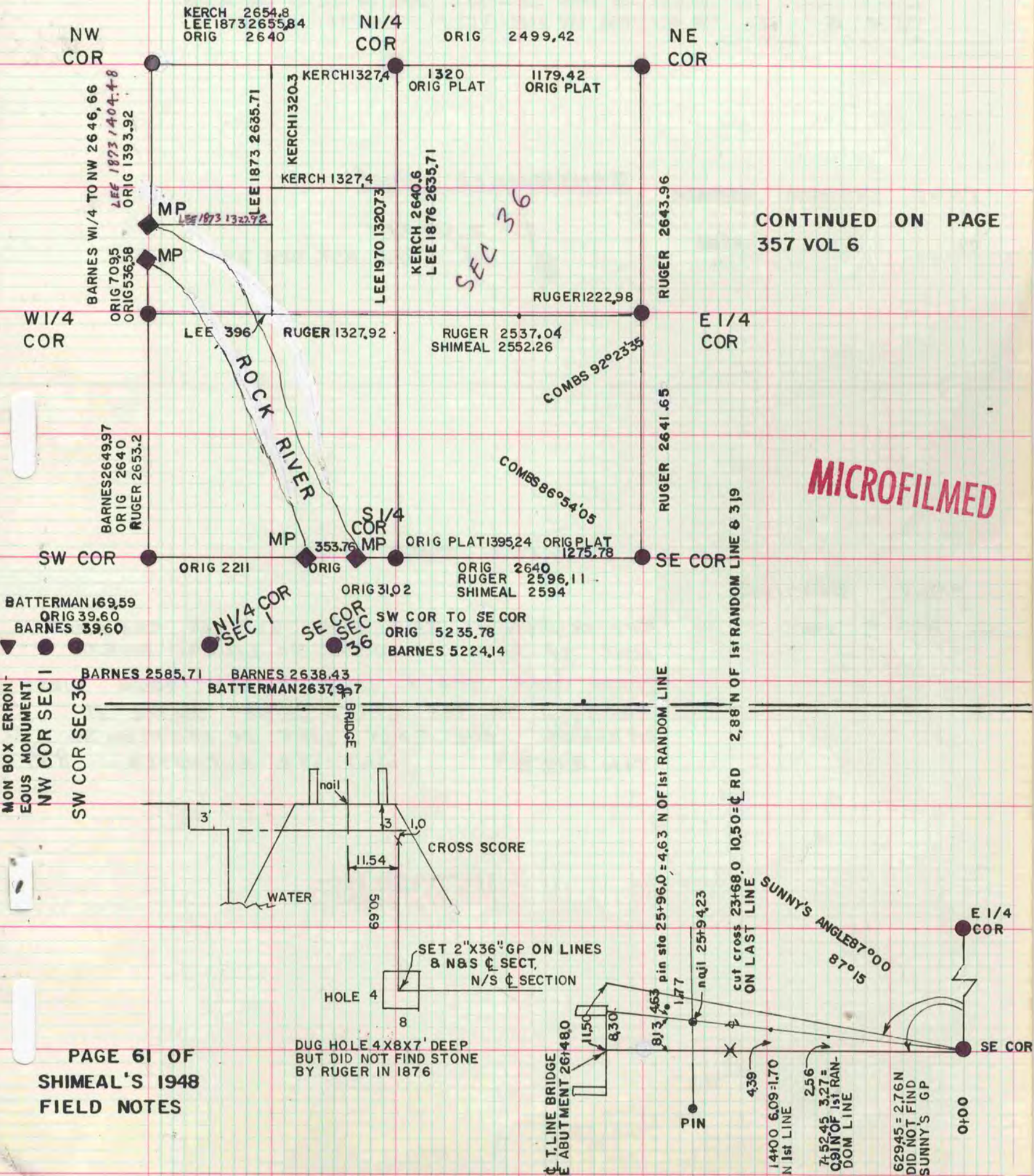
Of a Survey on Section **36** T **2** R **12** E. of the 4 P. M. in **BELOIT** Township
Rock County, Wisconsin, made the **19**

I hereby certify that the following is a correct record of said survey as made by me.

COUNTY BUILDING
CITY OF JANESVILLE

County Surveyor.

DATA COMPILED BY DONALD BARNES MARCH 24, 1986 *Donald Barnes*



CONTINUED ON PAGE 357 VOL 6

MICROFILMED

MON BOX ERROR
EOLUS MONUMENT
NW COR SEC 1
SW COR SEC 36

PAGE 61 OF
SHIMEAL'S 1948
FIELD NOTES

DUG HOLE 4X8X7' DEEP
BUT DID NOT FIND STONE
BY RUGER IN 1876

T. LINE BRIDGE
E ABUTMENT 26148.0

629.45 = 2.76N
DID NOT FIND
SUNNY'S GP