

PLAT AND RECORD

347

VOL. 6

Of a Survey on Section 36 T 5 R 12 E. of the 4 P. M. in ALBION Township

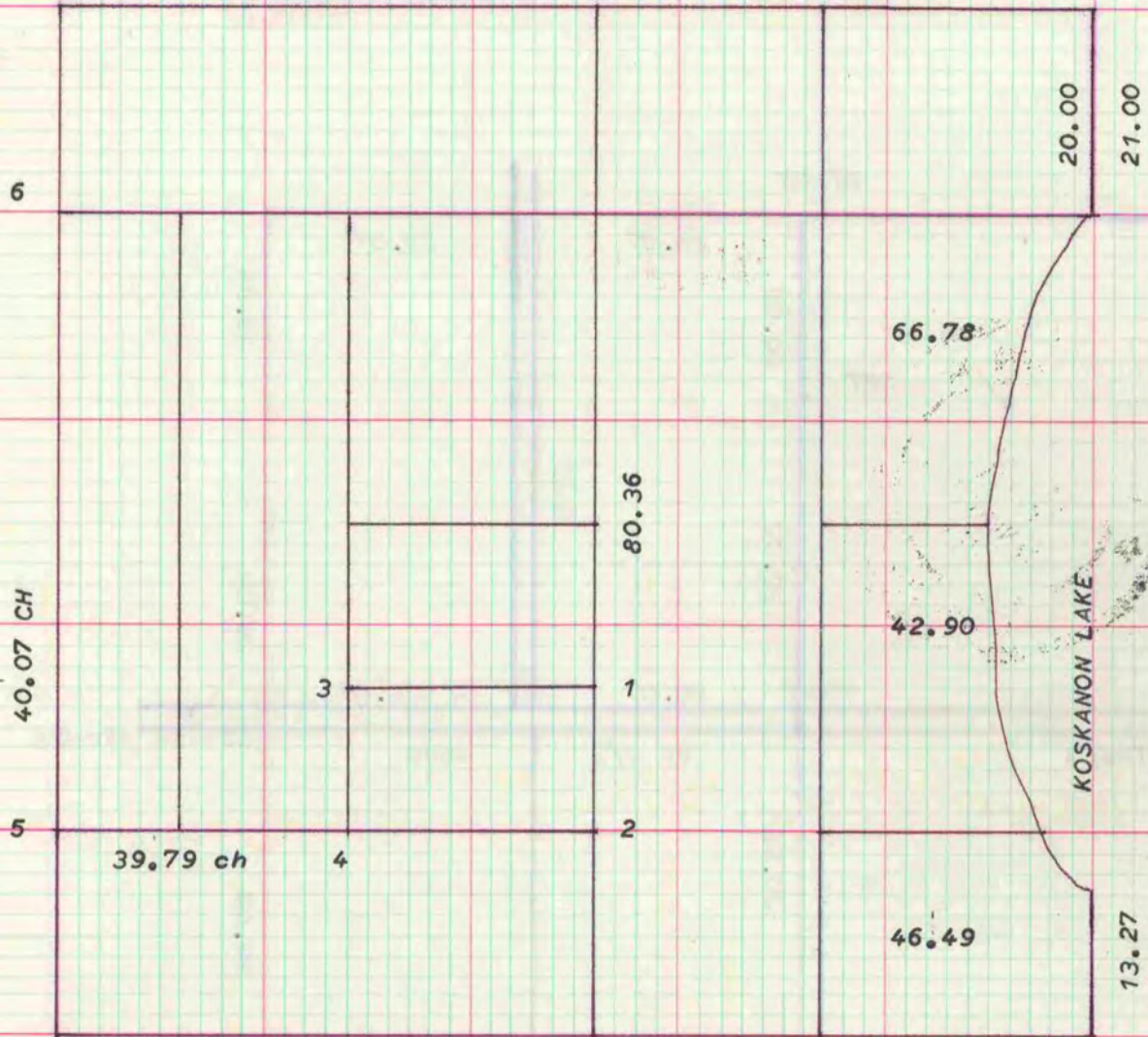
Rock County, Wisconsin, made JUNE the 12 19 1872

I hereby certify that the following is a correct record of said survey as made by me.

COUNTY BUILDING
CITY OF JANESVILLE

S.W. GRAVES DANE COUNTY SURVEYOR
County Surveyor.

COPIED FROM BOOK 5 PG 288 DANE COUNTY SURVEYOR'S RECORDS 2/21/86



SURVEYED ON THE 12 DAY OF JUNE 1872 THE ABOVE PLATED SECTION AND SET THE CORNERS AS IN THE PLAT. COMMENCED AT THE SOUTH WEST CORNER RUN NORTH TO QRT CORNER NO STAKE, FOUND TWO TREES BUT DID NOT AGREE IN ?? 20 LINKS RUN THROUGH AND DIVIDED THE DISTANCE AND IT AGREED WITH ONE TREE: SET STONE IN CORNER: COURSES AT THE SOUTH QRT CORNER AND RUN TO NORTH QRT CORNER TREES GONE BUT THE ST OF ONE TREE FOUND SET THE CORNER: SET THE CENTER STAKE: AND SET STONES AT NO. 1,2 ,3,4,5,6,7,8

MAY 1926 SURVEY FOR LADD AND PIERCE. ACREAGE ONLY WANTED. FB. 54 PAGE 8
ROBERT LONG DEPUTY

MICROFILMED