

PLAT AND RECORD

Of a Survey on Section 35 T 5 R 11 E. of the 4 P. M. in DUNKIRK Township
Rock County, Wisconsin, made JUNE the 19 19 1893

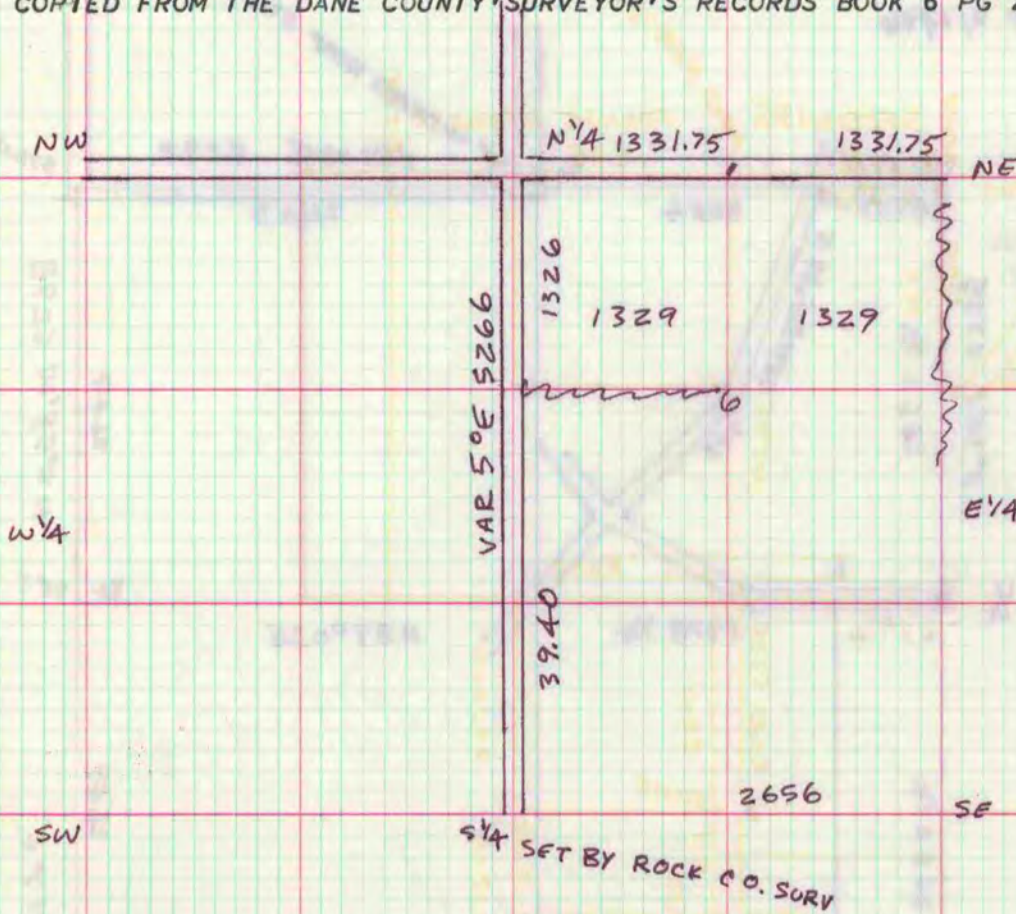
I hereby certify that the following is a correct record of said survey as made by me.

COUNTY BUILDING
CITY OF JANESVILLE

County Surveyor.

COPIED FROM THE DANE COUNTY SURVEYOR'S RECORDS BOOK 6 PG 266

2/21/86 Don Barnes



MICROFILMED

JUNE 19th 1893 SURVEY FOR F SWEENEY AND JONES. ALL DISTANCES IN FEET
LINE RUN TO ESTABLISH "6-1" THE FENCE "5-6" TOO FAR SOUTH, IN ESTABLISHING
THE LINE "6-1", COR 6 WAS SET ON THE N & S LINE ONLY IE NOT REALLY ESTABLISHED

COMMENCE AT THE NE SEC COR: A STONE FOUND IN THE CENTRE OF THE ROAD BY DIGGING IN
LINE WITH THE FENCE RUNNING SOUTH (WHENCE A POPLAR S8°E 26ft)
RUN WEST ALONG THE CENTER OF THE ROAD AT 2663 1/2 FT, FIND A HARD HEAD 8" DIAMETER WITH
PIECE OF AN OLD STAKE WHENCE A BLOCK OAK 16" (OLD BLAZE) AND PIECES OF STONE COAL

N48E 37 FT
COR 1 SET HARD HEAD 14"X8"X6" WITH BROKEN GLASS WHENCE ?
A HICKORY 10" S47°30'E 48 FT
A BLK OAK 8" N20°W 19.3 FT

W.L. MARCY DEPUTY CO. SURVEYOR

AUG 20, 1910 SURVEY FOR MR. AUGUST SCHULTZ. THE WEST 1/4 TAKEN IN ??? SINCE IT
WAS SURVEYED FROM EAST AND WEST AND HAS NOT BEEN CHANGED SINCE. THE NW. CORNER WAS LOST
SINCE IT WAS USED ???? AND BTS WERE GONE. CHAIN FROM N 1/4 OF 35 TO N 1/4 OF 34 FOUND N 1/4
OF 35 BY NE BT (MARCY) SET IRON ROD WITH LENGTH OF CONCRETE CULVERT AROUND IT.
B.T. IS DEAD BUT IS USED AS BULLETIN BOARD.. AT N 1/4 OF SECTION 34 FOUND SIGN OF A
STAKE BEING PUT DOWN AT A VERY EARLY DAY. A BLACK HOLE IN SAND. ABOUT 1 1/2 RODS FROM
SOUTH FENCE AND ABOUT 5 FT EAST OF EAST BARN LINE. IT IS A LITTLE EAST OF OLD
FENCE RIDGE COMING DOWN FROM THE SOUTH. 5310.4 FT FROM N 1/4 35 TO N 1/4 34. PRORATED DIST
AND RUN LINE FROM W 1/4 TO NW COR OF SECTION 35. SET A LARGE STAKE AT N.W. CORNER
BUT THIS ONLY ?? IN DEPARTURE. SEE FB NO 5 PAGE 14 H. HINTZE. CS.