

PLAT AND RECORD

353

VOL. 6

COUNTY BUILDING
CITY OF JAMESVILLE

Of a Survey on Section 35 T 5 R 10 E. of the 4 P. M. in RUTLAND Township

Rock County, Wisconsin, made MR MARCH the 10 19 1871

I hereby certify that the following is a correct record of said survey as made by me.

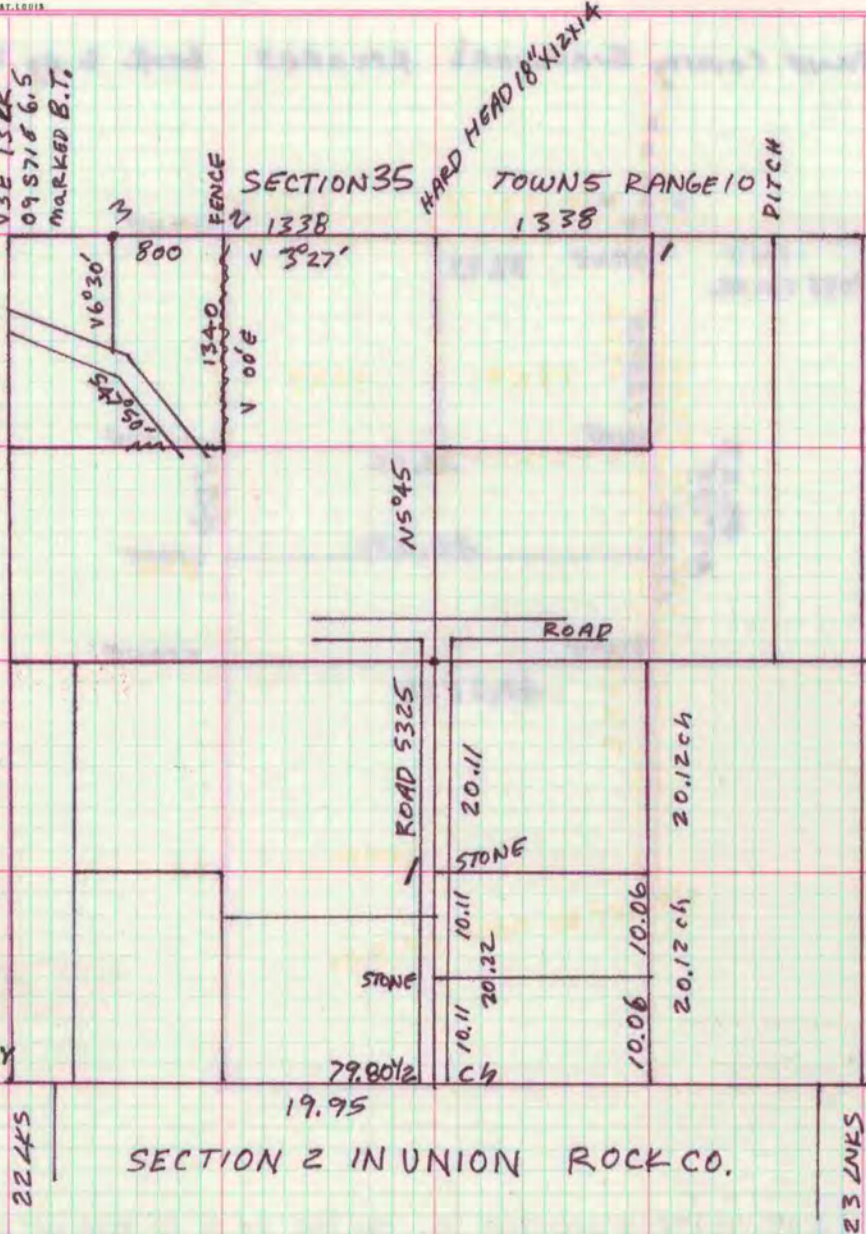
COURT
CITY OF JAMESVILLE

S.W. GRAVES DANE COUNTY SURVEYOR

County Surveyor.

AS THE NE CORNER WAY NOT DEFINITELY LOCATED THE N 1/4 COR IS UNCERTAIN, DEPENDENT UPON THE DITCH AT COR 1 AND FENCE AT 2 THE LINE OF GRAVES (TWO STONES), WOULD STRIKE WEST OF THE N 1/4 COR ESTABLISHED AUG 29/95

OCT 17-18 1921 SURVEY ?? WERE ?? FT THE ??? OF THE NW 1/4 NW 1/4 SEC 35 FOR MRS JOHNSON ?????? DESCRIPTION OF THE 20A ??? COR 4 (AS FIXED BY FENCES) THENCE NORTH ??? TO COR 2 THENCE WEST (VAR ??) 800 ft THENCE ?? (VAR 5°30'E) 752 TO CENTER OF HIGHWAY THENCE ALONG CENTER OF HIGHWAY S 65°E 118' ????????????



MICROFILMED

COMMENCE AT THE CENTER OF THE SECTION (CORNER PREVIOUSLY SET) RUN SOUTH TO S 1/4 CORNER: COULD NOT BE FOUND TREES AND STUMPS ALL GONE WEST TO SE CORNER AND RUN SHORT LINE TO S 1/4 CORNER SHORT 20 LINKS DIVIDED EQUAL IN THE CENTER AND SET A STAKE ONE AND ONE HALF LINKS WEST OF 1/4 CORNER IN ROCK COUNTY ON SECTION TWO, AND EQUALLY DIVIDED THE SW 1/4 OF SE 1/4 ????? JOHN D SPEAR AND MRS CLERK BY SETTING CORNERS AT 1, 2, 3, & 4

S.W. GRAVES
COUNTY SURVEYOR

AUG 29th 1895 SURVEY IN SEC 35 FOR THE TOWN BOARD OF RUTLAND RUN THE N & S CENTER LINE OF THE SECTION RESTORE THE N 1/4 COR, BUT IT WAS NOT VERY RELIABLE NW. CORNER FOUND BY ROOTS OF "U.S." B.TS. AT ONE (1 & 2) TWO FOUND STONES SET BY GRAVES WHICH WERE ADOPTED FOR THE CENTRE OF THE HIGHWAY- SEE DISTANCES IN RED & FIELD BOOK #2 P 77

W.L. MARCY DEPUTY

Copied from THE DANE COUNTY SURVEYOR'S RECORDS VOL 5 Pg 214

2/17/86