

PLAT AND RECORD

355

VOL. 6

COUNTY BUILDING
CITY OF JANESVILLE

Of a Survey on Section 34 T 5 R 11 E. of the 4 P. M. in DUNKIRK Township

Rock County, Wisconsin, made APRIL the 24, 25 19 1872

I hereby certify that the following is a correct record of said survey as made by me.

COUNTY OF DANE
CITY OF JANESVILLE

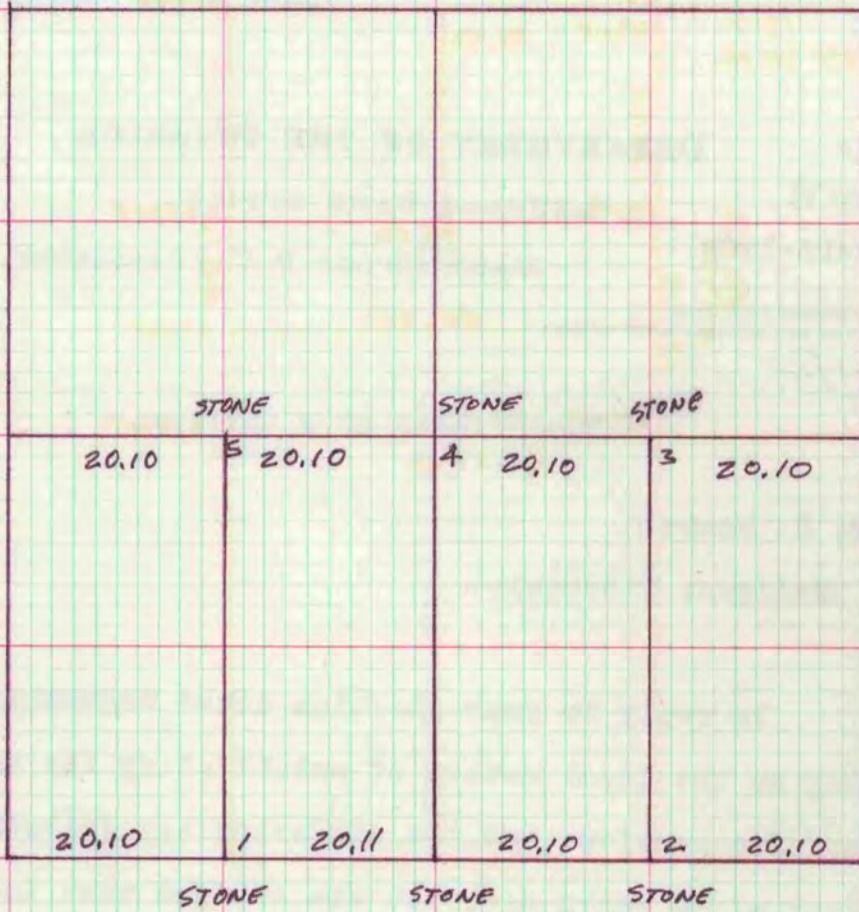
S.W. GRAVES DANE COUNTY SURVEYOR

County Surveyor.

COPIED FROM DANE COUNTY SURVEYOR'S RECORDS BOOK 5 PG 566

2/27/36 Don Barnes

79.72 ch



SURVEYED ON THE 24 & 25 DAYS OF APRIL 1872 THE ABOVE PLATTED SECTION COMMENCED AT SOUTH QRT CORNER STONE SET RUN THROUGH TO NORTH QUARTER CORNER STAKE GONE ONE STUMP FOUND SET CORNER IN HIGHWAY WEST QRT CORNER GONE RUN THROUGH THE WHOLE LINE DIVIDED THE DISTANCE EQUAL SET STONE IN QRT CORNERS: RUN THROUGH TO EAST QRT CORNER: SET STONES AT NO. 1, 2, 3, 4, 5

S.W. GRAVES
COUNTY SURVEYOR

MICROFILMED