

PLAT AND RECORD

Of a Survey on Section 11 T R E. of the 4 P. M. in CENTER Township

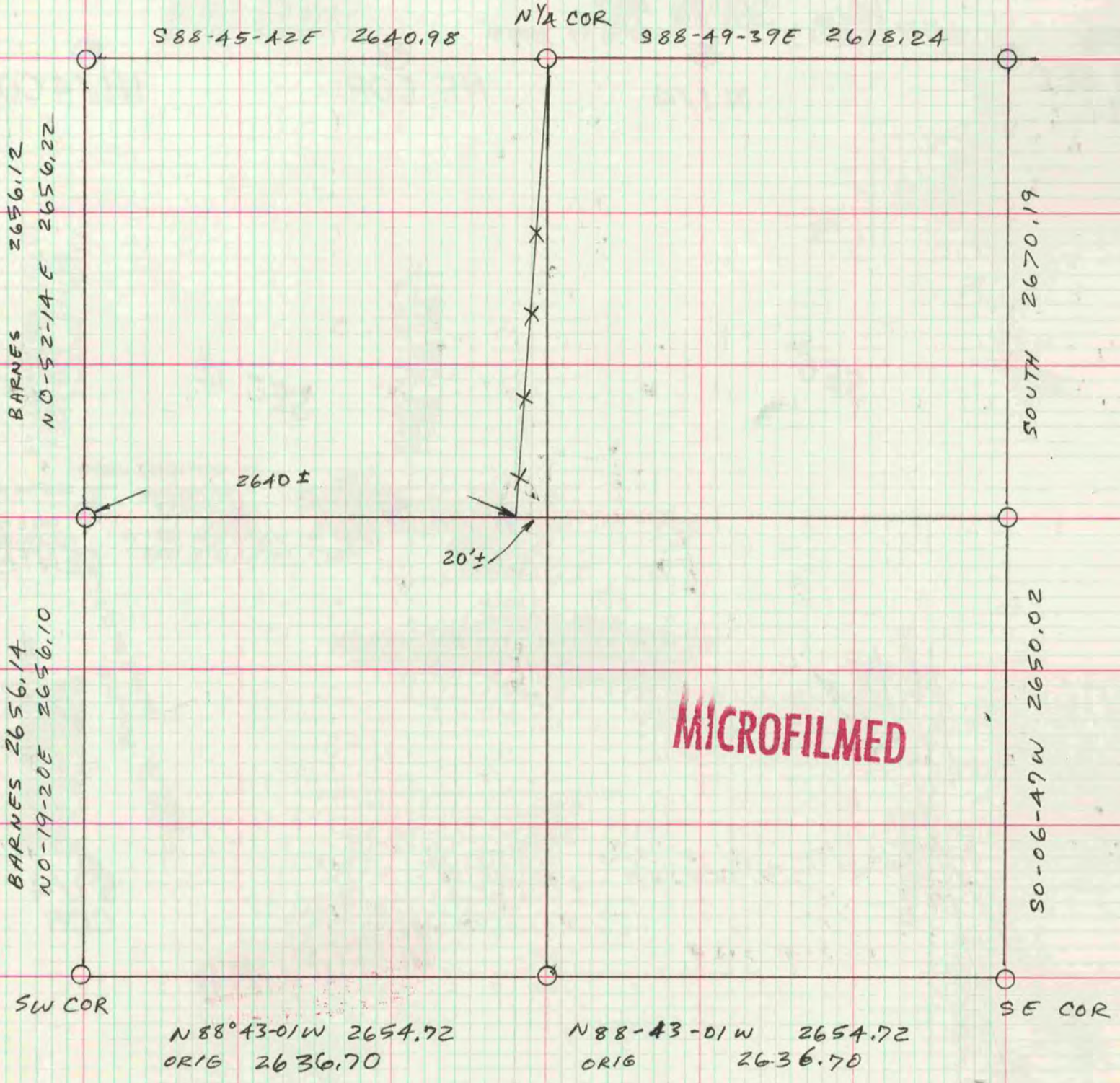
Rock County, Wisconsin, made May the 24 19 88

I hereby certify that the following is a correct record of said survey as made by me.

COUNTY BUILDING
CITY OF JANESVILLE

County Surveyor.

THE GEO. D. BARNARD COMPANY, ST. LOUIS



INFORMATION SUPPLIED BY HAROLD COMBS