

PLAT AND RECORD

34,35 3 11

CENTER
PLYMOUTH

Of a Survey on Section 3 T. 2 R. 11 E. of the 4 P. M. in Township

Rock County, Wisconsin, made October the 24 19 88

County Building
CITY OF JANESVILLE
I hereby certify that the following is a correct record of said survey as made by me.

Donald Barnes

County Surveyor, 1216
JANESVILLE
WI.

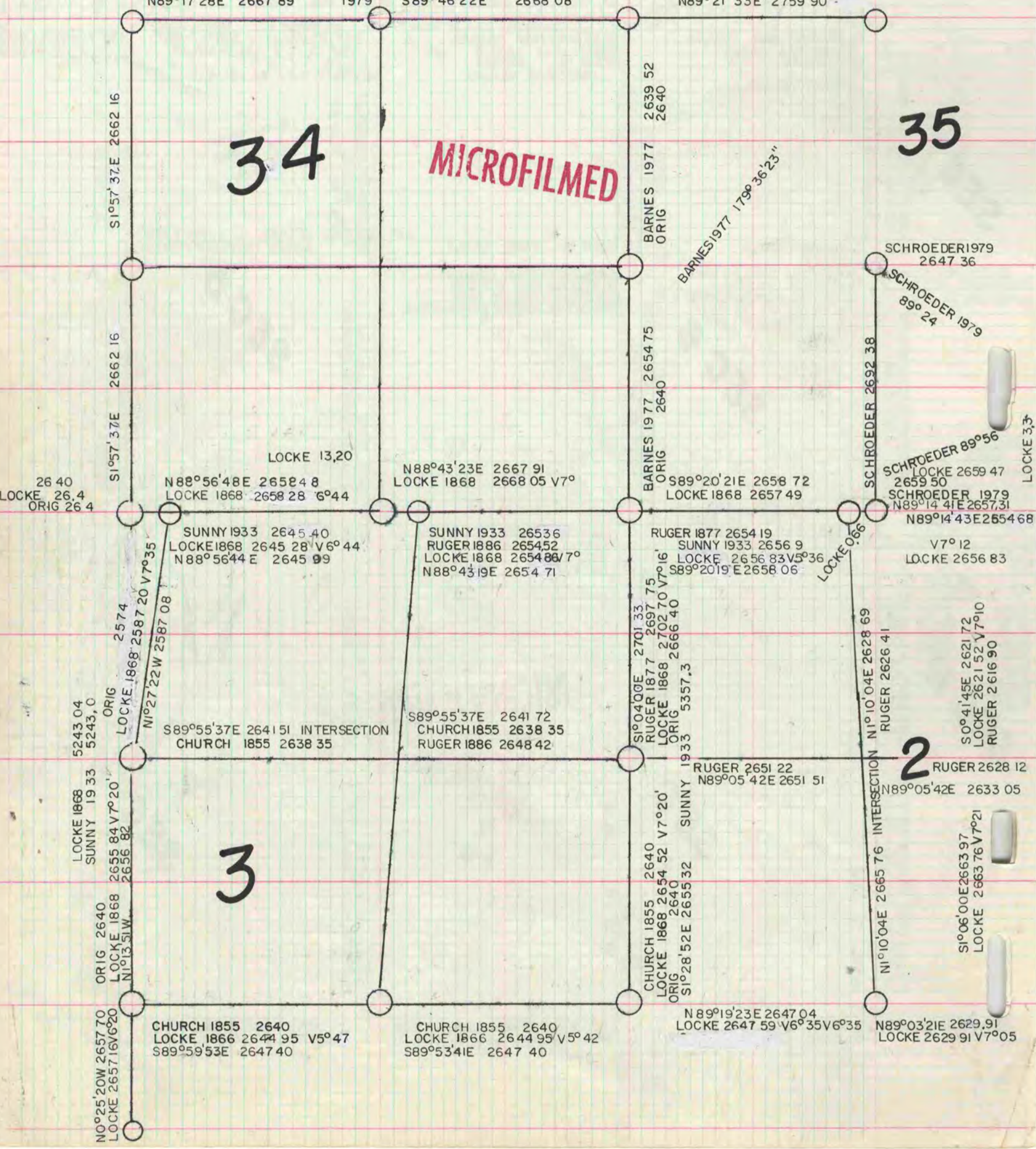


UNLESS OTHERWISE STATED ALL BEARINGS & DISTANCES ARE BASED ON STATE PLANE USING D.O.T CONTROL ON S.T.H 11

N88°39'50E 2667 85
ORIG 2634 06
LOCKE 1886 2664 75
BARNES, 1978 2668 09
N89°17'28E 2667 89

N89°36'14E 2668 12
ORIG 2634 06
BARNES, 1978 2668 16
S89°46'22E 2668 08

N89°21'33E 2759 90



34

35

MICROFILMED

2

3