

PLAT AND RECORD

401
VOL. 3

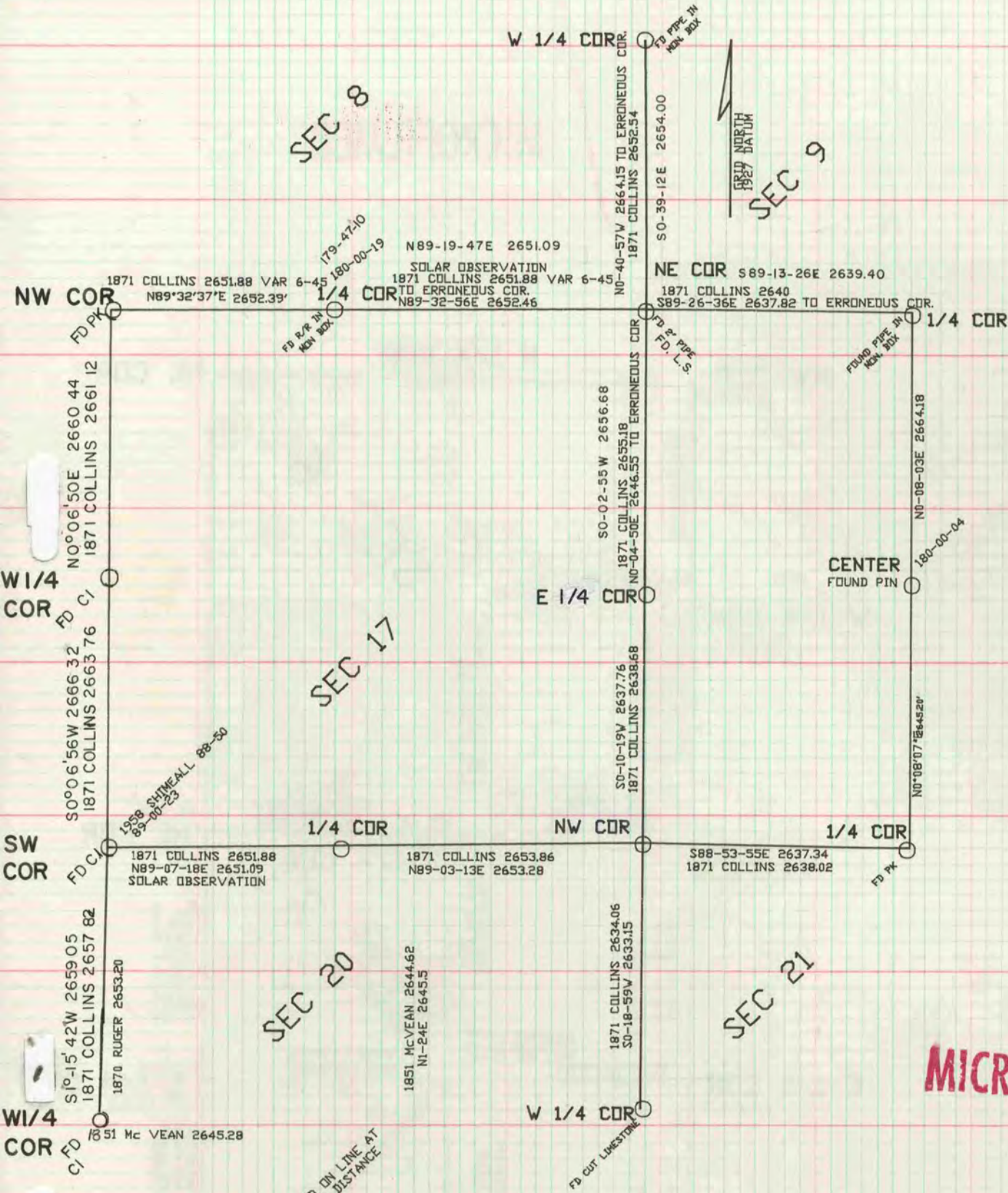
Of a Survey on Section **16, 17** T **1** R **11** E. of the 4 P. M. in **NEWARK** Township
Rock County, Wisconsin, made **SEPTEMBER** the _____ 19 **89**

I hereby certify that the following is a correct record of said survey as made by me.
**COUNTY BUILDING
CITY OF JANESVILLE**

Donald Barnes
DONALD A. BARNES
1216
JANESVILLE
WI.



THE GEO. B. BARRETT COMPANY, ST. LOUIS



COMPUTED ON LINE AT
RECORD DISTANCE

MICROFILMED