

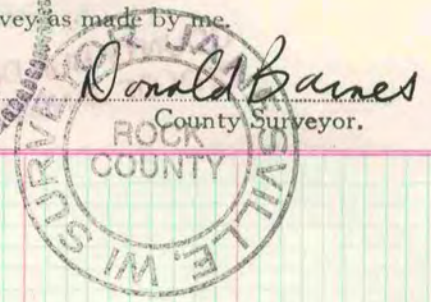
PLAT AND RECORD

403
VOL. 6

Of a Survey on Section **13** T **2** R **10** E. of the 4 P. M. in **SPRING VALLEY** Township
Rock County, Wisconsin, made **OCTOBER 19 19 89**

COUNTY BUILDING
CITY OF JANESVILLE

I hereby certify that the following is a correct record of said survey as made by me.

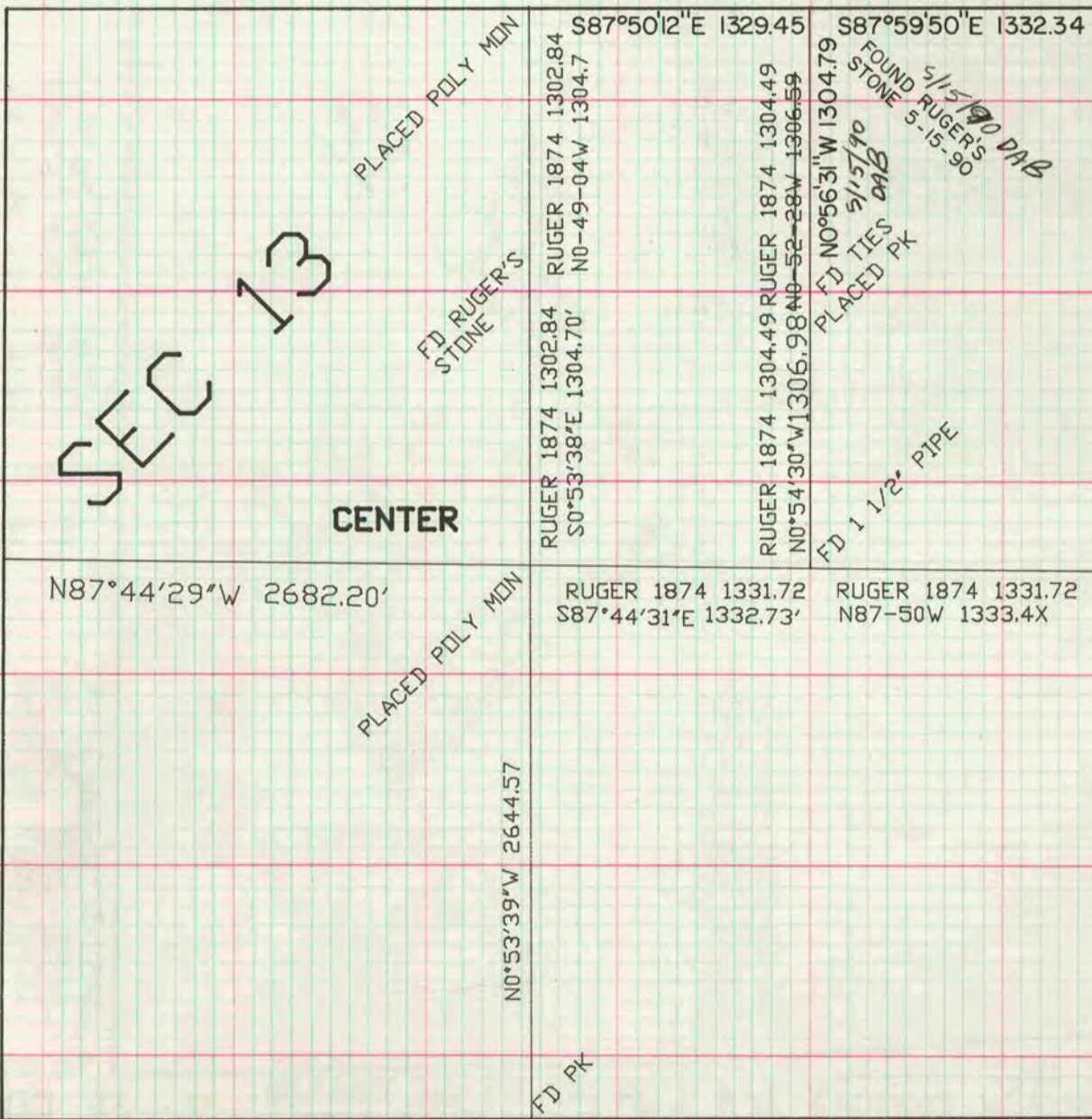


MICROFILMED

NW COR LOCKE 1867 2693.46
FD ALUM MON N86-35-42W 2698.14

N 1/4 COR ~~S87 55 01E 2661.78~~
RUGER 1867 2657.16
LOCKE 1867 1328.58
RUGER 1874 1328.58

NE COR



FD ALUM MON

LEE 1868 2617.56
LOCKE 2618.55
BARNES 1979 2615.91
N0-56-37W 2615.60

E 1/4 COR

W 1/4 COR

RUGER 1874 1331.72
S87°44'31"E 1332.73'

RUGER 1874 1331.72
N87-50W 1333.4X

SW COR

S 1/4 COR

SE COR