

PLAT AND RECORD

Of a Survey on Section 7 & 18 T 3 N. R. 10 E. of the 4 P. M. in MAGNOLIA Township

Rock County, Wisconsin, made MAY the 8th 1995

I hereby certify that the following is a correct record of said survey as made by me.

COUNTY BUILDING
CITY OF JANESVILLE

County Surveyor.

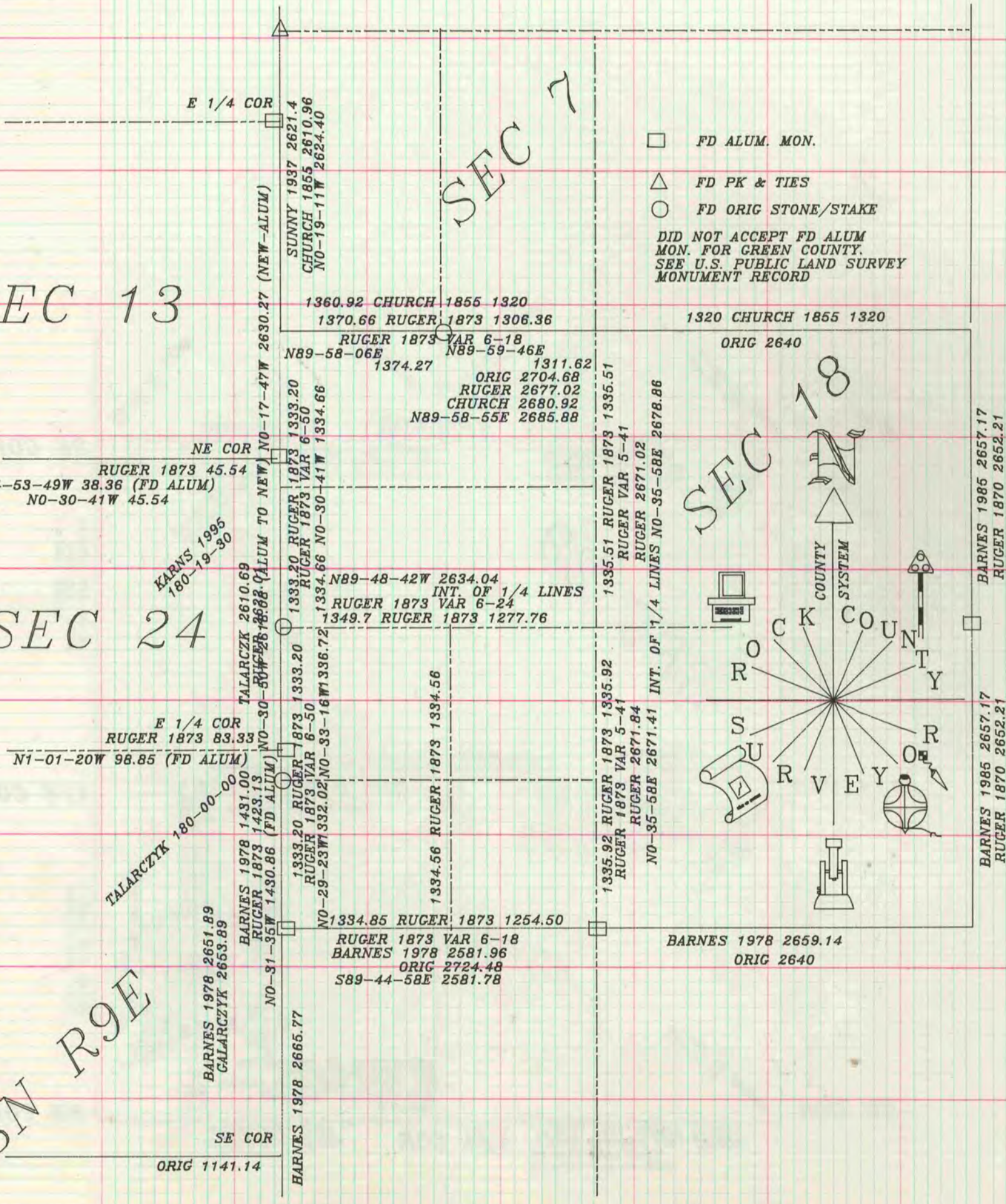
SEC 13

SEC 7

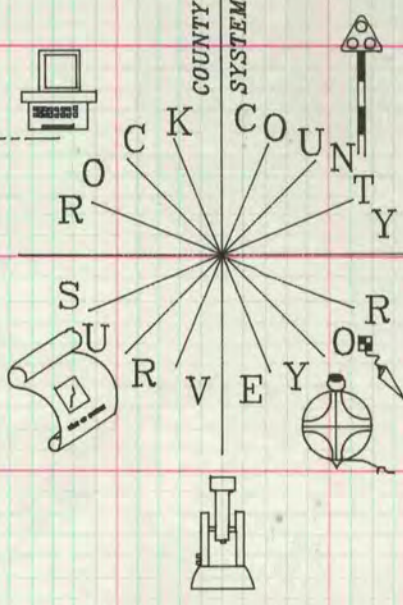
SEC 24

SEC 18

T3N R9E



FD ALUM. MON.
 FD PK & TIES
 FD ORIG STONE/STAKE
 DID NOT ACCEPT FD ALUM
 MON. FOR GREEN COUNTY.
 SEE U.S. PUBLIC LAND SURVEY
 MONUMENT RECORD



SE COR
ORIG 1141.14

BARNES 1978 2665.77

BARNES 1978 2651.89
GALARCZYK 2653.89

E 1/4 COR
RUGER 1873 83.33
N1-01-20W 98.85 (FD ALUM)

KARNS 1995
180-19-30

NE COR
RUGER 1873 45.54
N4-53-49W 38.36 (FD ALUM)
NO-30-41W 45.54

1360.92 CHURCH 1855 1320
1370.66 RUGER 1873 1306.36

RUGER 1873 VAR 6-18
N89-58-06E 1374.27
N89-59-46E 1311.62
ORIG 2704.68
RUGER 2677.02
CHURCH 2680.92
N89-58-55E 2685.88

1333.20 RUGER 1873 1333.20
RUGER 1873 VAR 6-50
1334.66 NO-30-41W 1334.66
N89-48-42W 2634.04
INT. OF 1/4 LINES
RUGER 1873 VAR 6-24
1349.7 RUGER 1873 1277.76

1333.20 RUGER 1873 1333.20
RUGER 1873 VAR 6-50
NO-29-23W 332.02 NO-33-16W 336.72
1334.56 RUGER 1873 1334.56

1334.85 RUGER 1873 1254.50
RUGER 1873 VAR 6-18
BARNES 1978 2581.96
ORIG 2724.48
S89-44-58E 2581.78

1335.51 RUGER 1873 1335.51
RUGER VAR 5-41
RUGER 2671.02
NO-35-58E 2671.41 INT. OF 1/4 LINES NO-35-58E 2678.86

1320 CHURCH 1855 1320
ORIG 2640

BARNES 1978 2659.14
ORIG 2640

BARNES 1985 2657.17
RUGER 1870 2652.21

BARNES 1985 2657.17
RUGER 1870 2652.21