

# PLAT AND RECORD

Of a Survey on Section.....T.....R.....E. of the 4 P. M. in.....Township

Rock County, Wisconsin, made AUGUST the 2 19 2000

I hereby certify that the following is a correct record of said survey as made by me.

COUNTY BUILDING  
CITY OF JANESVILLE

*Donald Burnes*

County Surveyor.

Page 2

Would you comment on your interpretation on whether Figure 1 or Figure 2 is correct.

We propose to place our new reinforced concrete monuments at the "correct positions", that is at "the true point of intersection of the two lines", and eliminate the monument at the closing corner position as was found in 1876 and 1932. Would this procedure be legal and correct?

We then propose to show on the Section Surveys map, which will be recorded with the County Register of Deeds, the location of both the true corner and the location where the closing corner was found. We feel that this is necessary since the establishment of the sixteenth corners on the north-south lines of the most northerly tier of quarter sections depends on proration of the measured distance in relation to the distances returned in the original field notes. The distance in the original field notes was to the closing corner obviously, so it appears we must know the original position of the closing corner in order to prorate (See Figure 3).

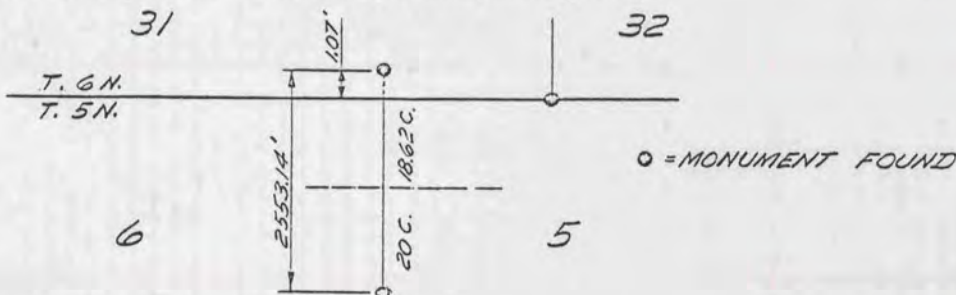


Fig. 3

We would locate the sixteenth corner in Figure 3 as follows:

20ch. x 2553.14' - West line of SW 1/4 of NW 1/4 Section 5  
38.62ch.

2553.14

- 1.07

2553.07' - West line of NW 1/4 Section 5

- 1322.19'

1229.88' - West line of NW 1/4 of NW 1/4 Section 5

Does your office concur that this is the correct procedure?

Lands in this portion of our city are experiencing rapid development. Several subdivisions and many land surveys presently underway depend upon the resolution of these problems herein presented. Therefore, we earnestly solicit your earliest reply to these questions.

Thank you for your considerations.

Very truly yours,

RICHARD N. HAY, L.S., P.E.  
City Engineer

RNH:bls

Encl.

cc: Wm. Wambach, Jr.

L. R. Evans

Sylvan Baudhuin

Robert Griffin

Kurt Bauer