



Sheriff Troy J. Knudson ROCK COUNTY SHERIFF'S OFFICE

Craig L. Strouse, Chief Deputy



Jude G. Maurer
Commander, Law Enforcement Services

"A Tradition of Service"

Erik D. Chellevold
Commander, Correctional Services

MEDIA RELEASE

Updated Information Regarding On Duty Deputy Involved Squad Crash

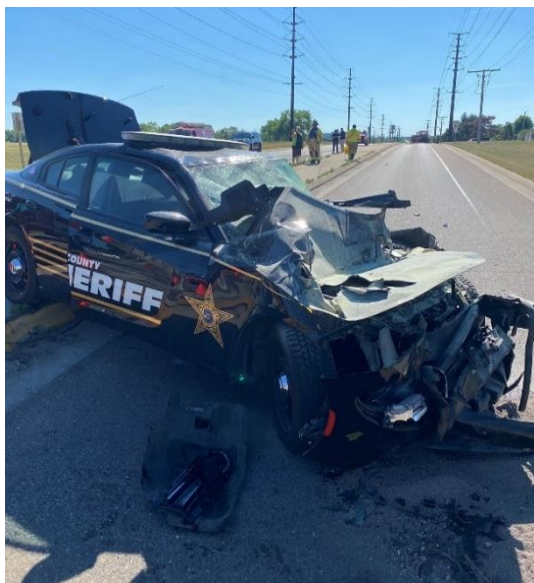
For Immediate Release

Date: June 24, 2022
Case #: SO2233087

Contact Person

Captain Mark Thompson
608-757-7944

UPDATE: The Deputy involved in yesterday's squad crash remains hospitalized with non-life-threatening injuries. The two occupants of the tow truck were treated and released last night. The crash remains under investigation by the Wisconsin State Patrol. Below are two photos of the accident.



ORIGINAL: On June 23, 2022, at approximately 3:50 p.m., Rock County Sheriff's Office Deputies were responding in emergency mode to assist another jurisdiction who had a report of an individual with a gunshot wound. While en route, at approximately 3:53 p.m., a Deputy was involved in a crash with a tow truck at E L T Townline Road and South Prairie Avenue in Turtle Township. The Deputy sustained minor injuries as did the occupants of the tow truck. The crash is currently under investigation by the Wisconsin State Patrol.

TROY J. KNUDSON
SHERIFF

By: Sergeant Clint Rowley

200 East U.S. Highway 14
Janesville, WI 53545
Phone: 608-757-8000 Fax: 608-757-7997