

Rock County Public Health Violence Prevention Assessment



VIOLENCE PREVENTION: A PUBLIC HEALTH ISSUE

Violence takes a toll on individuals, families, and the community.

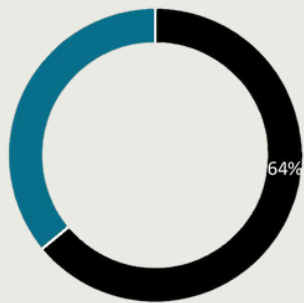
Those exposed to violence are more likely to develop physical and mental health conditions and experience job, school, or financial challenges.

Public health protects and improves the health and well-being of people. Community-wide intervention and prevention is key.

Rock County offers help and resources!

[2-1-1](#)

[Rock County Crisis Intervention](#)



64% of U.S. adults have 1 or more ACEs.

ADVERSE CHILDHOOD EXPERIENCES

Adverse childhood experiences (ACEs) are traumatic events that occur during childhood (ages 0-17). Traumatic events can carry into adulthood. Stress from ACEs can change brain development and affect how the body responds to stress. ACEs are linked to chronic health problems (CDC).

ACEs Events:

- Violence abuse and/or neglect
- Witnessing violent acts
- Growing up in a home with substance use or mental health problems
- Incarcerated family member

POSITIVE CHILDHOOD EXPERIENCES

Positive childhood experiences (PCEs) are experiences during childhood that promote safe, stable, and nurturing relationships and environments. They help children develop a sense of belonging, connectedness, and build resilience even if the child has experienced adversity (CDC).

Rock County Data

40%

Rock County Residents report 2 or more ACEs

85%

Rock County High School Students report feeling safe at school

33%

Rock County High School Students report feeling depressed

81%

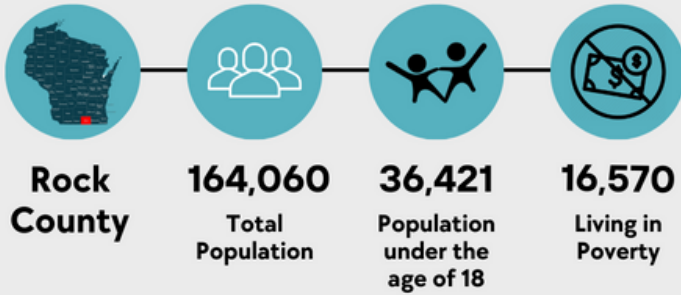
Rock County High School Students report they could turn to at least one adult besides parents

OUR COMMUNITY

Rock County Public Health completed a **Capacity Assessment** in the fall of 2023.

This process included gathering and discussing information from multiple and diverse sources throughout the County to better understand the services and resources available to community members and families.

2022 NUMBERS



Source: United States Census Bureau



ASSESSMENT FINDINGS SNAPSHOT

STRENGTHS

Family Engagement & Support



Community Engagement & Collaboration



Mental Health & Trauma Support



CHALLENGES

Limited Resources & Funding



Barriers to Access Resources



Socioeconomic & Family Related Challenges



ACTION PLAN

Improve Awareness of Risk Factors for Violence



Continue to Support Collaboration with Community Partners



Provide Technical Assistance to Agencies Addressing Risk Factors



ASSESSMENT FINDINGS UP CLOSE

Delving deeper into the assessment findings

STRENGTHS

Family Engagement & Support

Several organizations focus their efforts on engaging families with resources, skills development such as parenting classes or home visits, and addressing family needs.

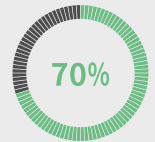
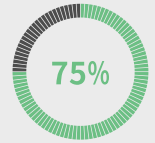
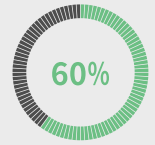
Community Engagement & Collaboration

Many organizations work closely with schools, other organizations, and the community as a whole to provide a wide range of services from education to nutrition and social programs.

Mental Health & Trauma Support

Many of the interviewees mentioned the importance of addressing mental health and trauma. Some organizations provide support groups, training for staff, and resources for families and children dealing with mental health challenges and trauma.

% of organizations who identified this strength:

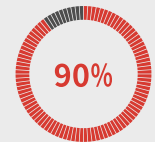
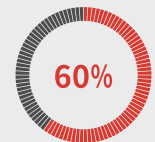
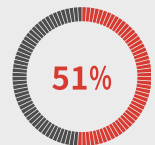


CHALLENGES

Limited Resources & Funding

Many organizations reported challenges related to limited resources and funding. This includes insufficient mental health support, capacity constraints, and lack of resources. Limited funding can impede the ability to provide comprehensive support to children and families.

% of organizations who identified this challenge:



Barriers to Access Resources

Accessing programs and services was a common theme mentioned among the different organizations. A lack of awareness of what programs are available within the community can hinder families accessing the support they need.

Socioeconomic & Family-Related Challenges

Poverty, domestic violence, and difficult family dynamics rose to the top as significant challenges that families encounter. Families that face economic hardship may struggle with sending their children to school which can lead to truancy issues. Additionally, family obligations and pressures can affect a child's ability to engage in school or extracurricular activities.

GOING FORWARD... *RCPH's commitment to violence prevention strategies:*

Awareness

- *Improve awareness of factors that influence violence.*

Collaboration

- *Enhance collaboration efforts with community partners.*

Support

- *Provide technical assistance to organizations working to address risk factors for violence.*

For more information, visit [Rock County Public Health](#)