

# Rock Haven Happenings

Rock Haven | 3400 County Trunk F, Janesville WI | (608) 757-5000

June 2024

## *A Note from Natalie*

### June Dates

#### Pride Month

**June 7**

*National Donut Day*

**June 11**

*National Children's Day*

**June 13**

*Nursing Assistants*

**June 14**

*Flag Day*

**June 16**

*Father's Day*

**June 18**

*International Picnic Day*

**June 19**

*Juneteenth*

Welcome Summer!

As the days grow longer and the sun shines, we welcome the warmth and joy of the summer season here at Rock Haven. With June upon us, it is the perfect time to embrace all the beauty and excitement that summer brings.

This season is a time of renewal, a time when we can bask in the glow of the sunshine and relish in the company of our friends and loved ones. At Rock Haven, we believe that the true magic of summer lies in the shared experiences. That's why we have planned various engaging activities and events, all aimed at making this summer truly memorable for our residents. Your participation is what makes these events truly special.

From the unique outdoor picnic planned for Father's Day, to the garden events led by our exceptional recreational therapy department, to the heartwarming visits from our four-legged friends, there is something truly special for everyone to enjoy. We urge you to seize these opportunities to connect, socialize, and create cherished memories.



I encourage you to stay hydrated, stay cool during hot days, and enjoy the simple pleasures of this season.

I am grateful for the opportunity to share this summer season with you all and look forward to making it a time filled with laughter, joy, and meaningful connections.

Here is to a beautiful summer ahead.

*Natalie J. Rolling-Edlebeck,*  
Doctor of Healthcare Administration, DHA  
Licensed Nursing Home Administrator, LNHA  
[Natalie.RollingEdlebeck@co.rock.wi.us](mailto:Natalie.RollingEdlebeck@co.rock.wi.us)  
608-757-5114



## News from Nursing

We hope you are having a great start to the month of June.

Celebrating dads, father figures and influential men in our lives

Happy Father's Day! – June 16th



Administrator Natalie and our IDON Aimee

*Aimee Thomas  
Interim DON*

## Infection Control Corner

Each year the World Health Organization (WHO) campaign aims to maintain a global profile on the importance of hand hygiene in health care and to bring people together in support of hand hygiene improvement worldwide.

Healthcare-associated infections (HAIs) are among the most common adverse events that occur in the context of healthcare delivery: every year, 136 million cases of antibiotic-resistant infections associated with healthcare occur worldwide.

World Hand Hygiene Day was celebrated on May 5, 2024. This year, the focus is on promoting knowledge and capacity building of health and care workers through innovative and impactful training and education on infection prevention and control, including hand hygiene.

Why is sharing knowledge about hand hygiene still so important? Because it helps stop the spread of harmful germs in healthcare!

Resources:

<https://www.paho.org/en/campaigns/world-hand-hygiene-day-2024#:~:text=Accelerate%20action%20together.&text=This%20year%2C%20the%20focus%20is,and%20control%2C%20including%20hand%20hygiene.>

*Chelsea Phillips, RN  
Infection Preventionist*

## Some Words from Social Services

Would you like to have an impact on the care received by your loved one?

Do you wish to know more about what is happening at Rock Haven?

Please watch for a *family council* meeting scheduled later this summer so families can learn more as a group and get feedback from one another. Your input is important.

The Rock Haven Social Services team is here for the residents and families. Social workers are found in every facet of community life. The role of social workers in elderly care leads to unique opportunities, which include making deep and meaningful connections with residents and their families, changing problematic systems at both the personal and community levels, and the knowledge that their work has a direct positive impact on those in need.

*Gail* - 608-757-5325

*Teena* - 608-757-5104

## Greetings from Finance



The month of June is the beginning of the Rock County budget process. We are currently working on projecting our expenditure needs and anticipated revenues for 2025.

The term budget comes from the French word "bougette" which means a little bag or wallet. The bag contained papers setting out the nation's revenue, expenditure and tax. Papers were removed from the bougette and presented to parliament. Today, the meaning of the word, budget is simply a spending plan based on income and expenses.

*Joanne Foss*  
*Interim Business Office Manager*

# News from Activities



May Day was celebrated at Rock Haven with baskets, flowers, and snacks. Here are 3 of our lovely ladies receiving a basket. Special thanks to Irene Demrow's family for brightening our day. Tina, Irene's daughter, always make us feel better by bringing in the children.



Planting our gardens is in full swing at Rock Haven. This was discussed at Resident Council as well as "Heara from Vera". The Residents spoke and I went and got what they wanted. They also started many seedlings in their neighborhoods that will soon be transplanted into vegetable and flower beds. This was a role they loved and, as you can see, still do. Olive and Verna are in charge of this bed and are getting advice from their peers.





There was much love shared at Rock Haven on Mother's Day.

Thank you to all the families that stopped out-I think a record was set for visits and outings. I enjoyed talking to each one of you!

There was a special menu for the ladies, handmade cards, a special Mother's Day church service, cupcakes for Linger Longer and Activities made fresh ice cream sundaes to order.



Verna (Limestone West) and her husband Harley are members of Our Savior Lutheran Church. Our Savior, in collaboration with the Crisis and Pregnancy Hotlines donated roses to all the ladies on Limestone West. It was an honor to pass those out.



Laura (Environmental Services) and her beautiful family brought flowers to all the ladies on Sandstone West. It is so good to see the intergenerational activity here at Rock Haven. Those ladies will not forget that kindness and who knows - there may be a future physician or nurse in the making!

Megs Emanuel has been an integral part of our Mother's Day Celebrations here at Rock County, and I am glad to call her my friend. Every year, in honor of her beloved son Brody, she and her "squad" deliver flowers to nursing home Residents in the surrounding area.

The mission has grown to include "Brody's Babies" for folks in dementia care as they are a comforting measure for Residents.



I love it so much as she brings young folks in which the Residents enjoy-of course, but she is modeling care for elders in honor of her son. Here you can see the team arrive, one of many flatbeds of flowers that they brought and the smiles they bring to Rock Haven.

If you are interested in helping them, they can be easily found on Facebook under Brody's Flowers.

*Vera Polglaze*  
*Activities Director*

## *From ES / Materials*

We would like to wish all the fathers/dad's a Happy Father's Day. We hope your day is filled with family/friends and love.

Environmental Services, Materials and Linen

*Michelle Lynch  
ES and Materials Manager*

## *Food for Thought from the Kitchen*

Father's Day is just around the corner and here at Rock Haven in Dietary we are putting together a special menu to celebrate all the wonderful fathers out in the world. Dietary is inviting you to come join your fathers on June 16, 2024 at 12:00pm to celebrate this special occasion.

Meal tickets are available Monday to Friday 8am to 4:30 pm, weather permitting we will be offering families to sit outside and enjoy lunch together with their loved ones. As of May, the Dietary team is working together to set a new summer cycle menu that will start up on June 17.

Have a wonderful start to the summer!

*Amanda Beaver  
Food Service Manager*

## *Message from Maintenance*

Maintenance would like to wish everyone a Happy Father's Day!

*Maurine Braun  
Facilities Administrative Assistant*

# June Birthdays!

## Resident Birthdays

<b>Geri T.</b> <i>June 5</i>	<b>Mike S.</b> <i>June 17</i>	<b>Beverly F.</b> <i>June 17</i>	<b>James C.</b> <i>June 18</i>
<b>Marjorie H.</b> <i>June 20</i>	<b>Nancy J.</b> <i>June 21</i>	<b>Lynn H.</b> <i>June 25</i>	<b>Martha S.</b> <i>June 29</i>

## Employee Birthdays

<b>Casedy B.</b> <i>June 1</i>	<b>Jeanette D.</b> <i>June 4</i>	<b>Audrey B.</b> <i>June 5</i>	<b>Donnalle G.</b> <i>June 14</i>
<b>Natalie D.</b> <i>June 17</i>	<b>Alyssa C.</b> <i>June 19</i>	<b>Carley M.</b> <i>June 20</i>	<b>Shelly H.</b> <i>June 21</i>
<b>Elizabeth B.</b> <i>June 22</i>	<b>Bonnie L.</b> <i>June 24</i>	<b>Maile D.</b> <i>June 24</i>	<b>Cerenna J.</b> <i>June 24</i>
	<b>Laura F.</b> <i>June 25</i>	<b>Maurine B.</b> <i>June 27</i>	



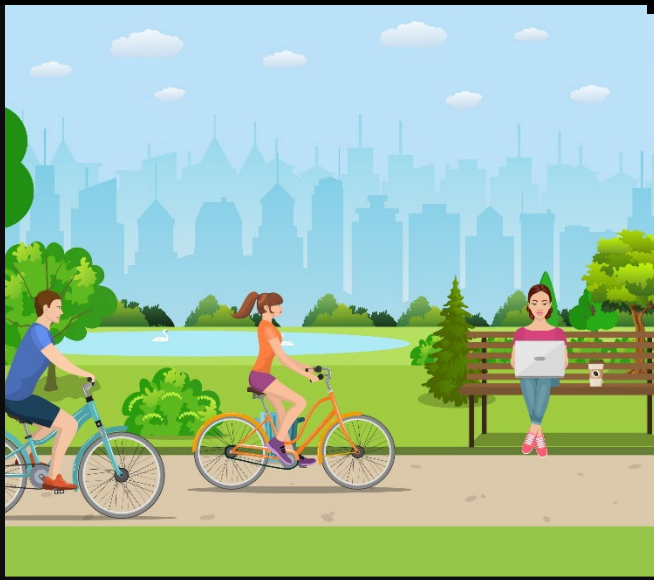
# Welcome to our New Residents!

## *Limestone West*

**Susan B.  
Zandren C.  
Sharon W.**

## *Sandstone West*

**Patsy B.  
Susan C.  
Sandra K.  
Joyce S.**



## *Sandstone East*

**James C.  
Howard K.  
John M.**

# Welcome to the Team!

**Jasmine M.**  
CNA

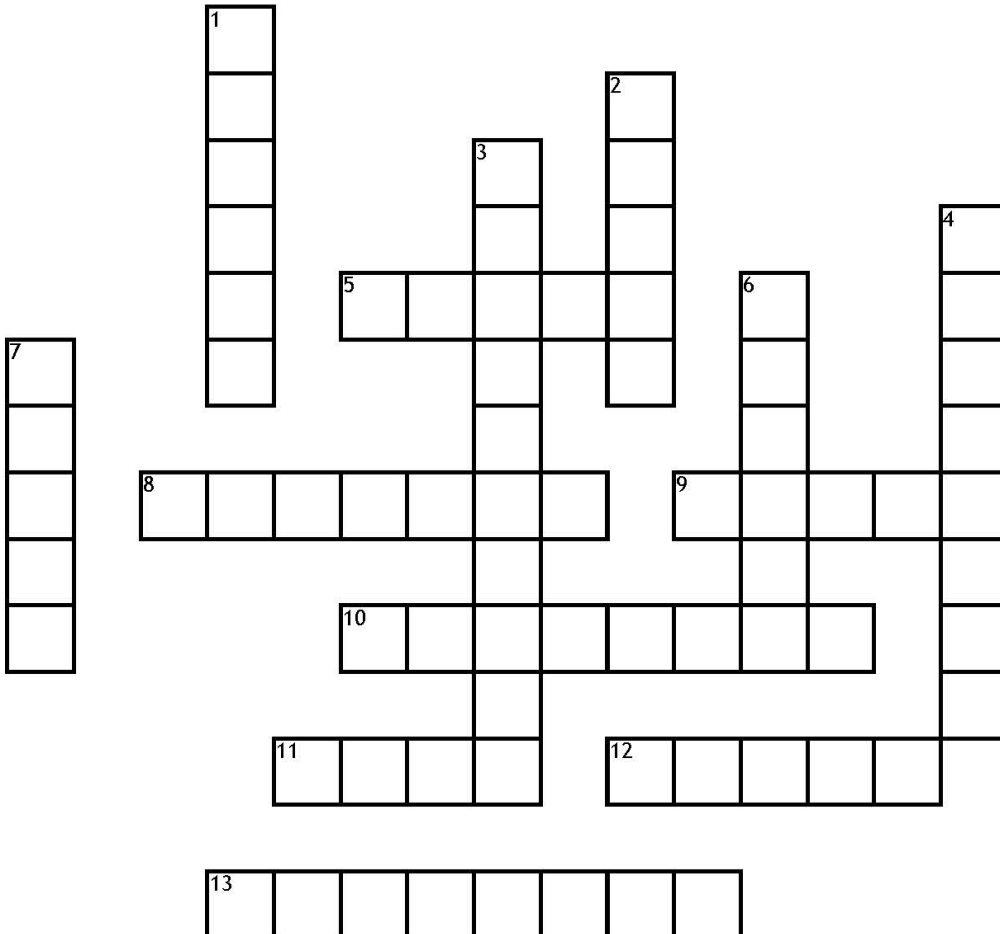
**Serenity M.**  
CNA

**China C.**  
CNA

**Aniyah G.**  
CNA

**Ashley M.**  
CNA

## A WALK IN THE PARK



### Across

- Mow the \_\_\_\_\_.
- Daffodils, tulips, etc.
- A place to sit.
- Animal with a fluffy tail.
- Robin, cardinal, or sparrow.
- Maple, elm, ash, etc.
- Physical activity

### Down

- These begin to collect on the ground in the fall.
- Walk your dog on a \_\_\_\_\_.
- Swings, slide, merry-go-round, etc.
- Radiates from the sun.
- A light wind.
- Walkways

# National Parks

## Word Search

**DIRECTIONS:**  
Find and circle  
the national park  
names in the grid.  
Look for them in all  
directions including  
backwards and  
diagonally.

ACADIA  
ARCHES  
BADLANDS  
BRYCE CANYON  
CANYONLANDS  
DEATH VALLEY  
DENALI  
EVERGLADES  
GLACIER  
GRAND CANYON



GRAND TETON  
GREAT SAND DUNES  
GREAT SMOKY MOUNTAINS  
HAWAII VOLCANOES  
JOSHUA TREE  
MOUNT RAINIER  
OLYMPIC  
REDWOOD  
ROCKY MOUNTAIN  
SEQUOIA  
SHENANDOAH  
YELLOWSTONE  
YOSEMITE  
ZION